

BUDDHA IMAGE
 (SYDNEY, AUSTRALIA)

Scale ~ 1" = 100'-0"
 Date ~ 11 - 8 - 2009
 Architect Group II

EAST or SOUTH

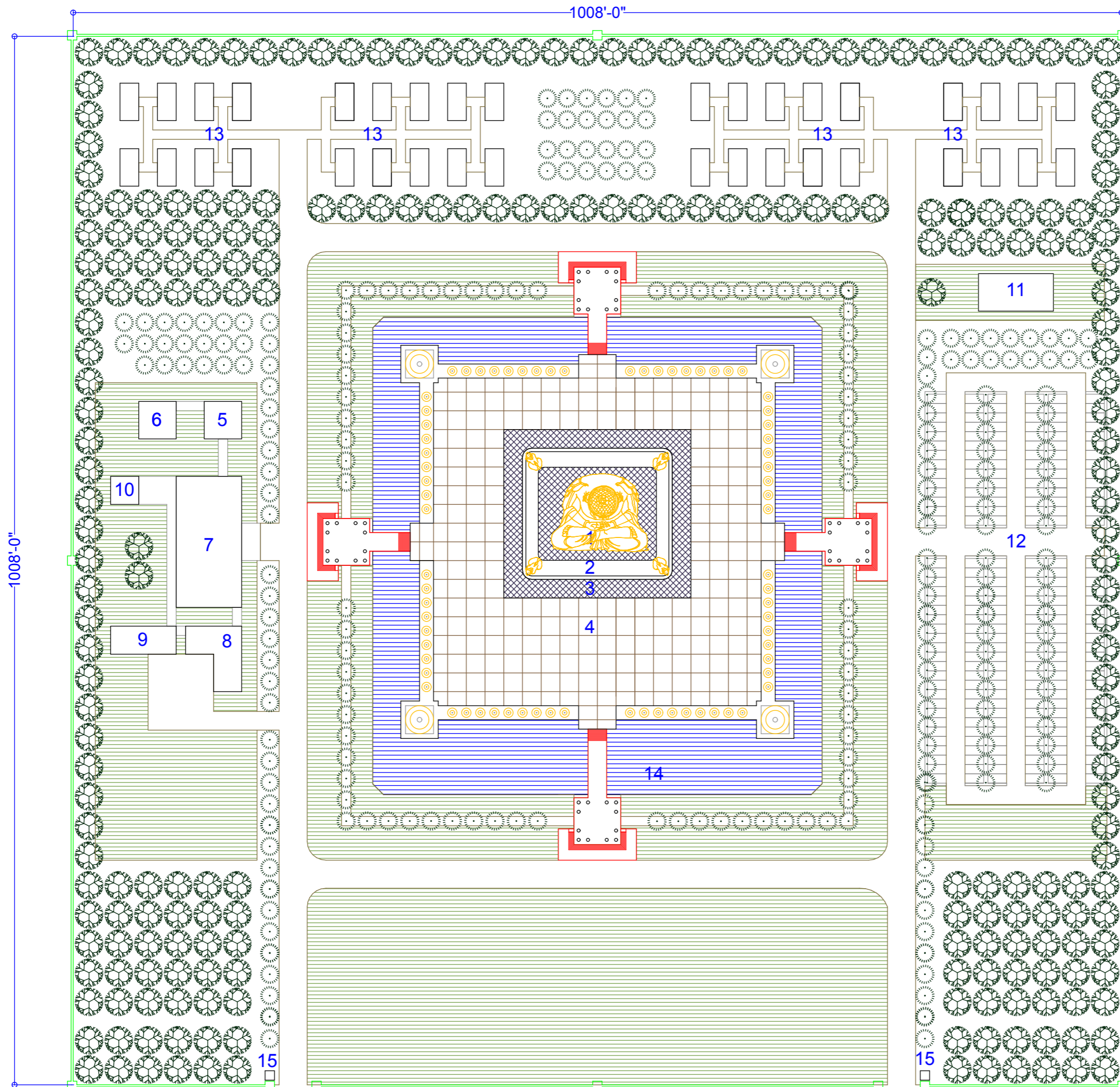


REMARK
 THE IMAGE SHOULD BE FACED
 EITHER NORTH OR WEST.

PLOT AREA - 23.3 acres

LEGEND

1. BUDDHA IMAGE
2. THRONE - 144' x 126'
3. PLATFORM - 180' x 126'
4. TERRACE - 342' x 342'
5. CHIEF MONK - 36' x 36'
6. ORDINATION HALL - 36' x 36'
7. MULTIFUNCTION HALL - 81' x 126'
8. OFFICE - 27' x 63'
9. KITCHEN - 63' x 27'
10. ZAYAT - 27' x 27'
11. MONKS - 72' x 36'
12. PARKING - 216 NO.s
13. MEDITATION - 36 Rms
14. KUMUDRA LAKE
15. GATE HOUSE



MASTER PLAN